

# Arrowhead Specialty Meats

Arrowhead Specialty Meats is a supplier to the foodservice industry of the highest quality meats, including exotic game gourmet meats, and artisanal ingredients. Arrowhead Specialty Meats sells to over 200 chefs and restaurants in 49 states. Their client list includes well-respected chefs and restaurants.



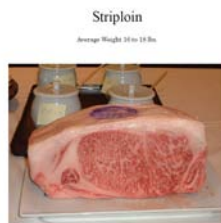
Arrowhead Specialty Meats is extremely proud to offer Tajima Bloodline, A5 Grade Kobe beef from Japan. This is the highest grade available in Japan. This Super Premium Grade / Red Label is from the Gunma prefecture of Japan and originates from one of three plants specially designated for export to the USA under HACCP.

## Kobe Beef Strip Loin A5

**2/13 lb avg**

**SUPC 6329124**

Imported from Japan Tajima bloodline kobe



## Kobe Beef Ribeye A5

**2/14 lb avg**

**SUPC 6329112**

Imported from Japan Tajima bloodline kobe

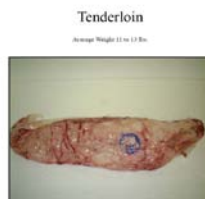


## Kobe Beef Tenderloin A5

**1/11 lb avg**

**SUPC 6329132**

Imported from Japan Tajima bloodline kobe



*Arrowhead Specialty Meats ships via FedEx Standard Overnight Mon-Thurs*

**NO REFUSALS / NO RETURNS**

**DAMAGE CLAIMS MUST BE FILED WITHIN 48 HOURS**

