

California Vegetable Specialties

California Vegetable Specialties, founded in 1987, is America's largest producer of both red and white endive, with both conventional and organic product lines. The company farms year round from its location in Rio Vista, California.



Endive belongs to the genus *cichorium* - the chicory family. Seeds are sown in the spring to produce a root by late fall. The roots are topped in the field, harvested and placed in cold storage. As needed throughout the year roots are removed from storage and planted in dark humid "forcing" rooms where the endive grows from the bud on top of the chicory root.

Endive
1/6 lb
SUPC 0863431
Red and White Endive



Endive Organic
1/6 lb
SUPC 8512475
Red and White Endive



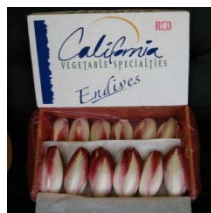
Endive Belgian White
1/5 lb
SUPC 8512400



Endive Belgian White
1/10 lb
SUPC 8512341



Endive Belgian Red
1/4 lb
SUPC 8512398



Endive Belgian Red
1/8 lb
SUPC 8512364



California Vegetable Specialties ships via FedEx Standard Overnight Mon-Thurs
NO REFUSALS / NO RETURNS
DAMAGE CLAIMS MUST BE FILED WITHIN 48 HOURS



**Endive Belgian White
Organic
1/5 lb
SUPC 8512446**



**Endive Belgian White
Organic
1/10 lb
SUPC 8512412**



**Endive Belgian Red
Organic
1/4 lb
SUPC 8512461**



**Endive Belgian Red
Organic
1/8 lb
SUPC 8512432**



**California Vegetable Specialties ships via FedEx Standard Overnight Mon-Thurs
NO REFUSALS / NO RETURNS
DAMAGE CLAIMS MUST BE FILED WITHIN 48 HOURS**

