



HONOLULU
F·I·S·H
C O M P A N Y

Honolulu Fish Company is unanimously recognized in the New York Times, Coastal Living, Food & Wine Magazine and many food and lifestyle publications as the nation's top raw Hawaiian fish supplier. It truly is the freshest fish you can buy.

Wild
Caught
Hawaiian
Fish



Shipped Overnight Directly from Hawaii

Gourmet
fresh fish
supplied to
many 5 star
Restaurants
and hotels
nationwide

Quality and Freshness
at the Highest Standards



- More than 30 varieties of fish from Hawaiian Pacific waters
- Shipped overnight directly from the source
- Fresher than buying from your seafood retailer
- All shipments vacuum sealed using Dry Lock Fresh Guard®
- Sashimi-grade standards for the highest quality fillets



Tuna Bigeye #1+ Lg

1/20 lb avg

SUPC 5815240

15 -22 lb loin of #1+ grade
Hawaiian Bigeye Ahi



Tuna Bigeye #1 Lg

1/20 lb avg

SUPC 6753743

15 -22 lb loin of #1 grade
Hawaiian Bigeye Ahi



Tuna Bigeye #1 Med

1/20 lb avg

SUPC 7667520

8-12 lb loin of #1 grade
Hawaiian Bigeye Ahi

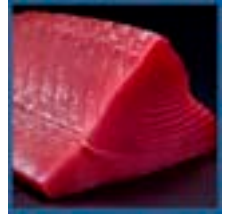


Tuna Bigeye #2 Lg

1/20 lb avg

SUPC 7665763

15-22 lb loin of #2 grade
Hawaiian Bigeye Ahi



Tuna Albacore #1

1/20 lb avg

SUPC 5060038

8-12 lb loin of #1 grade
Hawaiian Tombo Ahi



Sea Bass Hapuka

1/20 lb avg

SUPC 8004414

5-10 lb fillets of wild caught
New Zealand Sea Bass



Escolar Hawaiian

1/20 lb avg

SUPC 5060072

2-4 lb fillets of Hawaiian
Escolar



Marlin Pacific Blue

1/20 lb avg

SUPC 6753248

5-15 lb natural cut loin of
Hawaiian Kajiki



Marlin Pacific Striped

1/20 lb avg

SUPC 7667488

5-15 lb natural cut loin of
Hawaiian Nairagi



Marlin Pacific Shortbill

1/20 lb avg

SUPC 7667496

5-10 lb natural cut loin of
Hawaiian Hebi



Moonfish Hawaiian Lrg

1/20 lb avg

SUPC 7667298

15-25 lb skin-on fillet of
Hawaiian Opah



Hawaiian Pink Snapper

1/20 lb avg

SUPC 7665649

2-3 lb skin-on fillets of
Hawaiian Opakapaka



Honolulu Fish Company ships via FedEx Standard Overnight Mon-Thurs
NO REFUSALS / NO RETURNS
DAMAGE CLAIMS MUST BE FILED WITHIN 48 HOURS



Blue Nose New Zealand

1/20 lb avg

SUPC 8095535

2-3 lb skin-on fillets of Pacific Blue Nose



Tasman King Salmon

1/20 lb avg

SUPC 6753933

3-4 lb fillets of Tasman King Salmon



Barracuda

1/20 lb avg

SUPC 6038739

3-4 lb skin-on fillets of Hawaiian Kaku



Shark Mako

1/20 lb avg

SUPC 6038792

5-15 lb natural cut loin of Hawaiian Mako



Monchong

1/20 lb avg

SUPC 6753131

3-4 lb skin-on fillets of Lrg Hawaiian Monchong



Barramundi

1/20 lb avg

SUPC 7409479

1-2 lb fillets of skin-on Barramundi



Hawaiian Wahoo

1/20 lb avg

SUPC 6753966

3-4 lb fillets of skin-on Hawaiian Ono Sashimi



Pacific Swordfish

1/20 lb avg

SUPC 5062601

5-15 lb natural cut loin of Hawaiian Swordfish



Tilapia Sunfish

1/20 lb avg

SUPC 5077100

10-12 oz skin-off fillets of Sunfish



Hawaiian Mahimahi

1/20 lb avg

SUPC 5060201

2-4 skin-on fillets of Hawaiian Mahimahi



Mero Sea Bass

1/20 lb avg

SUPC 5077084

5-10 lb skin-on fillets of Mero Sea Bass



Ocean Seaweed Salad

4/4.4 lb avg

SUPC 6038683

Sesame oil dress Wakame Seaweed Salad 4.4 lb (fzn)



Honolulu Fish Company ships via FedEx Standard Overnight Mon-Thurs
NO REFUSALS / NO RETURNS
DAMAGE CLAIMS MUST BE FILED WITHIN 48 HOURS



U12 Blue Prawns
1/26.4 lbs
SUPC 8478992
26.4 lb case of U12
Pacific Blue Prawns



Calamari Asian Salad
4/4.4 lbs
SUPC 7744432
Calamari, Asian veg vinaigrette
seafood salad 4.4 lb (fzn)



Crab Red Meat
1/20 lb
SUPC 8004479
2/2.5 fancy pack: crab meat
claw, marus, body (fzn)



Octopus
4/4.4 lb avg
SUPC 8178715
Octopus Legs 4.4 lb (fzn)



Hamachi
1/20 lb avg
SUPC 7744206
4-6 lb fillets of Japanese fillets
Japan Hamachi



Snapper New Zealand
1/20 lb avg
SUPC 8004432
2-3 lb skin-on fillets of New
Zealand Snapper



Catch Of The Day
SUPC 5235845
Mix 5 lbs of selected fillet
fish up to the 20 lb master



Ordering **Catch Of The Day** is as easy as contacting your Sysco Marketing Associate. Every **Catch Of The Day** order will be followed up by a Honolulu Fish phone call. We will then inform you of exactly what fish is available at the time ensuring the premium quality you have come to expect from Honolulu Fish and ChefEx. Remember, you can order the fish in 5 pound increments (with some exceptions) up to the minimum 20 pound master weight. Product arrives in 48 hours via FedEx (sometimes next day). Order your fish today and allow your customers to experience the best the Pacific Ocean has to offer.



Honolulu Fish Company ships via FedEx Standard Overnight Mon-Thurs
NO REFUSALS / NO RETURNS
DAMAGE CLAIMS MUST BE FILED WITHIN 48 HOURS

