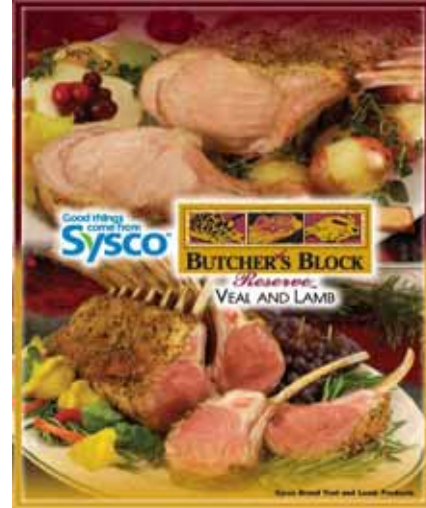


Butcher Block Veal & Lamb

The Butcher Block Reserve Process
Verified Veal & Lamb Program
provides Sysco customers with the
highest-quality veal & lamb available.



Both veal calves and lamb are raised by certified growers and are certified USDA Choice. Carcasses are selected for quality and consistency and have program specs which must be met to qualify. American lamb is up to 10,000 miles fresher than imported lamb and is available year round. Bon Appétit!

**Veal Rib Chop Special
"Tomahawk"**
10/15 oz avg
SUPC 6307997



Lamb Fore Shank
12/1.1 lb avg
SUPC 7639487



Lamb BRT XT Leg
2/6.4 lb avg
SUPC 8202731



Veal BI Strip Chop
10/16 oz avg
SUPC 4580197



Lamb STO Leg
2/11.3 lb avg
SUPC 8202897



Lamb Loin Chop 4 oz
40/4 oz avg
SUPC 1323005



Marcho Farms ships via FedEx Standard Overnight Mon-Thurs
NO REFUSALS / NO RETURNS
DAMAGE CLAIMS MUST BE FILED WITHIN 48 HOURS



Veal Tenderloin Whole
8/1.8 lb avg
SUPC 7638265



Veal Butt Tender
Trim to Silver
16/1 lb pcs
SUPC 7637374



Veal Osso Bucco 2"
12/14oz avg
SUPC 7761424



Lamb Hind Shank
Heel Off
12/1.25 lb avg
SUPC 5045253



Veal Porterhouse
12/14 oz avg
SUPC 1396563



Veal Top Round
Cap Off
2/5.3 lb avg
SUPC 7444912



Lamb Rack 9 Bone
Cap On
4 2.5 lb avg
SUPC 7127455



Veal Special Rib Chop
12/14-16 oz avg
SUPC 4761750



Veal Rack 6 Bone
Chop Ready 4x4
2/6 lb avg
SUPC 7443922



Veal Short Rib
12/14-16 oz avg
SUPC 1736875



Lamb Loin Chop
27/6oz avg
SUPC 2665461



Lamb Stew
2/5 lb bags
SUPC 7639354



Veal Porterhouse
10/16 oz avg
SUPC 1201250



*Marcho Farms ships via FedEx Standard Overnight Mon-Thurs
NO REFUSALS / NO RETURNS
DAMAGE CLAIMS MUST BE FILED WITHIN 48 HOURS*

